

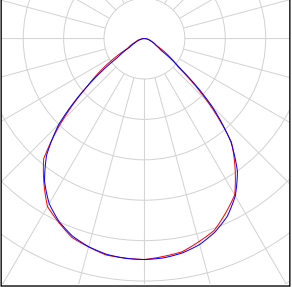
## **Biglux Mobile Light Tower, 4\*100W,7M**

## Content

### Biglux Mobile Light Tower, 4\*100W,7M

Luminaire list.....	3
Views.....	4
<b>Site 1</b>	
Luminaire layout plan.....	6
Calculation surface 1 / Perpendicular illuminance.....	7

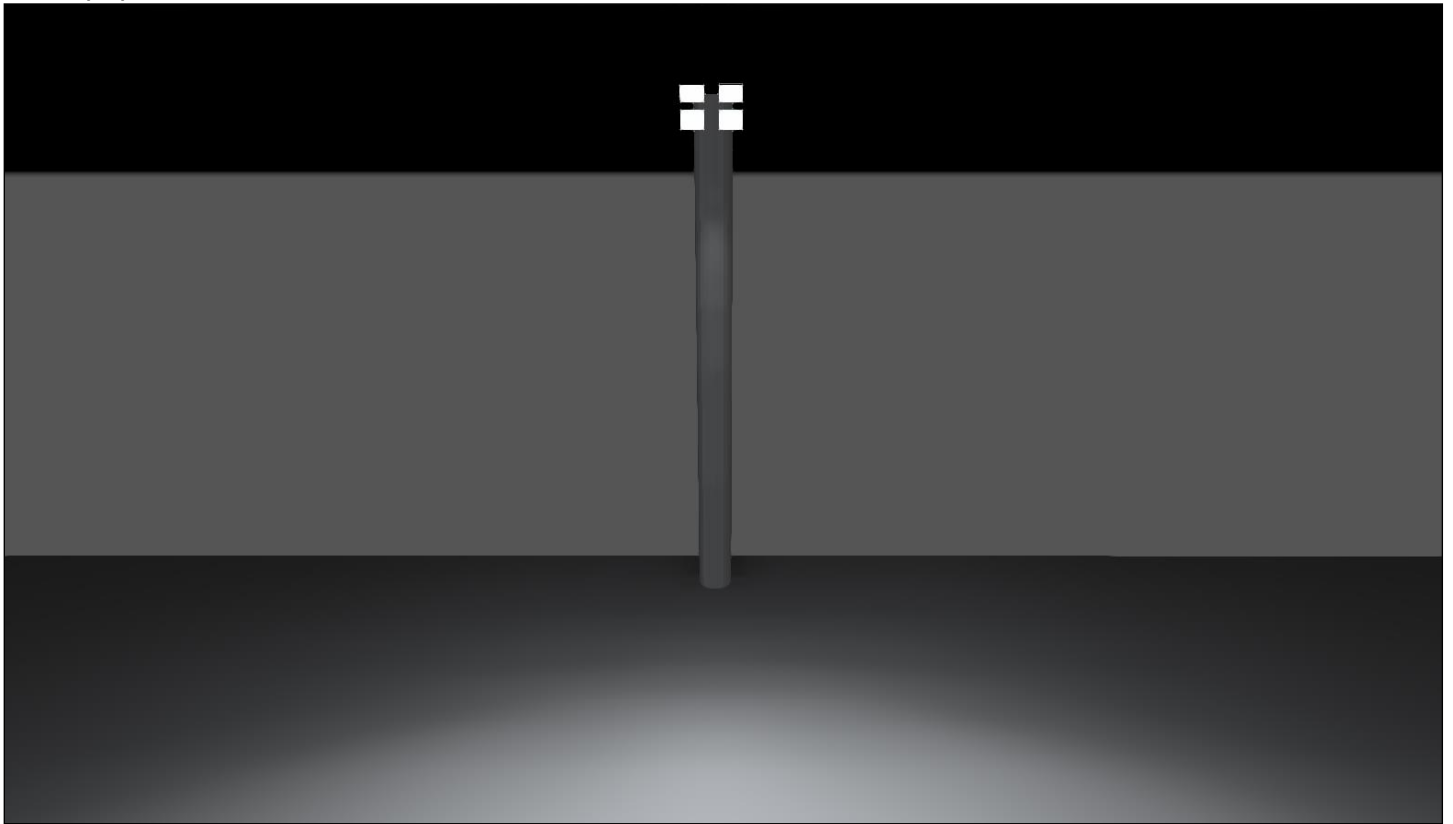
**Biglux Mobile Light Tower, 4\*100W,7M**

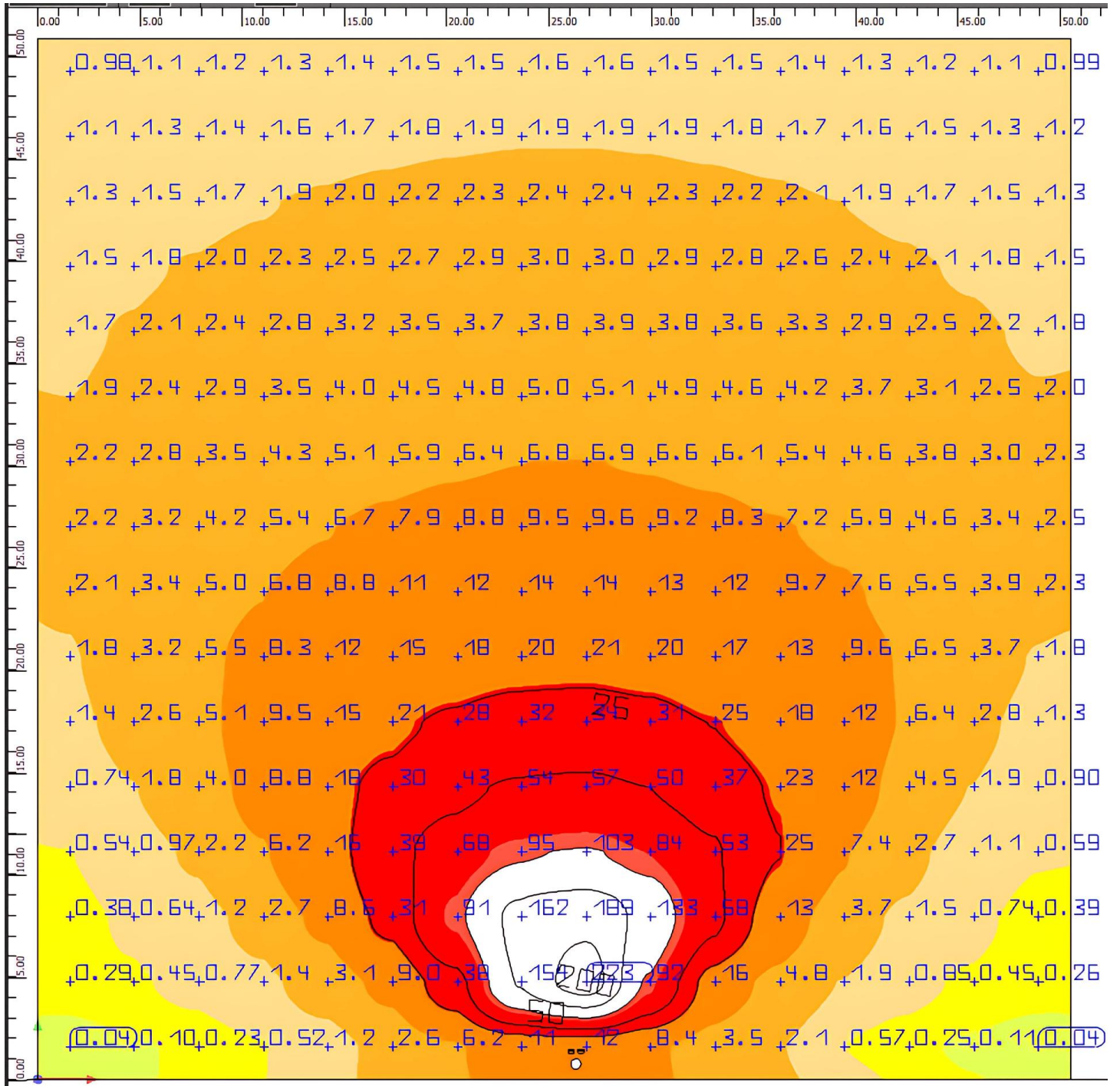
Quantity	Luminaire (Luminous emittance)		
4	DIALux - 3606-100W CW 90° Luminous emittance 1 Fitting: 1x Light output ratio: 100.77% Lamp luminous flux: 15055 lm Luminaire luminous flux: 15171 lm Power: 98.4 W Luminous efficacy: 154.2 lm/W  Colourimetric data 1x: CCT 5700 K, CRI 80	See our luminaire catalog for an image of the luminaire.	

Total lamp luminous flux: 60220 lm, Total luminaire luminous flux: 60684 lm, Total Load: 393.6 W, Luminous efficacy: 154.2 lm/W

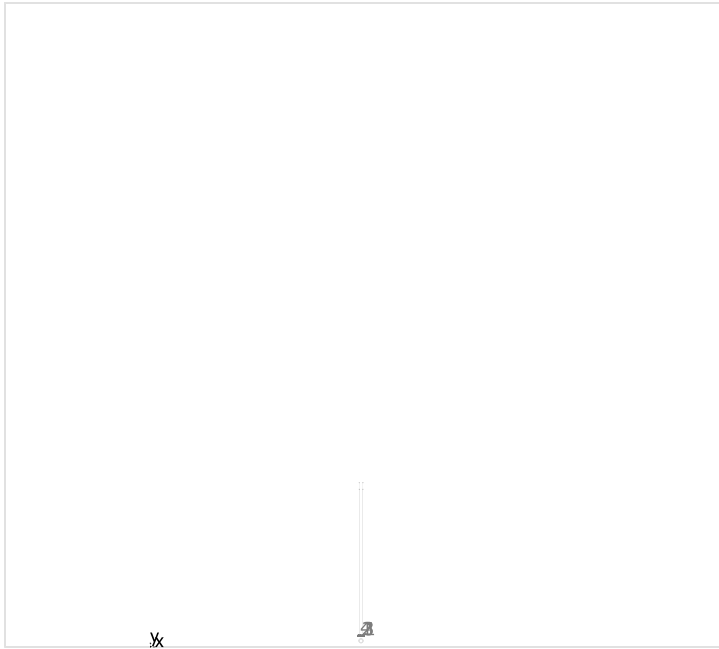
## Biglux Mobile Light Tower, 4\*100W,7M

### Site 1 (14)





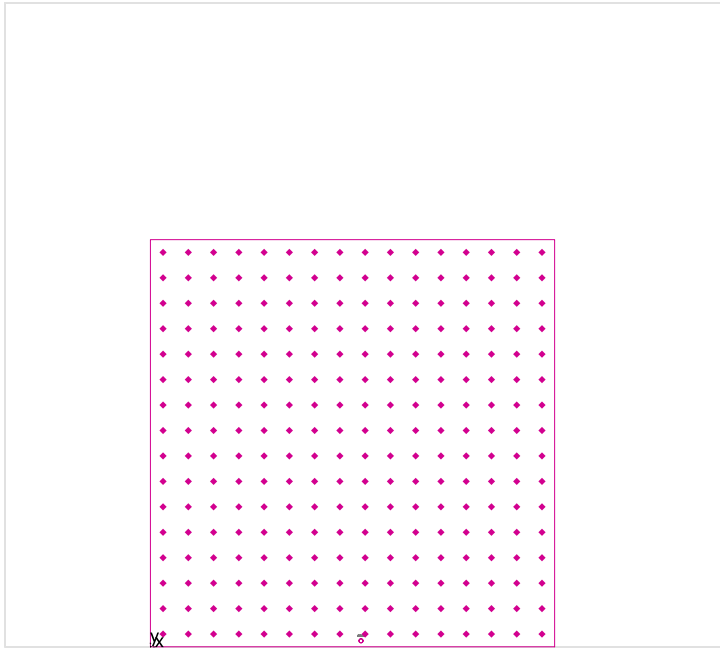
## Site 1



### DIALux 3606-100W CW 90°

No.	X [m]	Y [m]	Mounting height [m]	Maintenance factor
1	26.554	1.325	7.000	0.80
2	26.096	1.324	7.000	0.80
3	26.554	1.325	6.700	0.80
4	26.096	1.324	6.700	0.80

## Calculation surface 1 / Perpendicular illuminance



Maintenance factor: 0.80

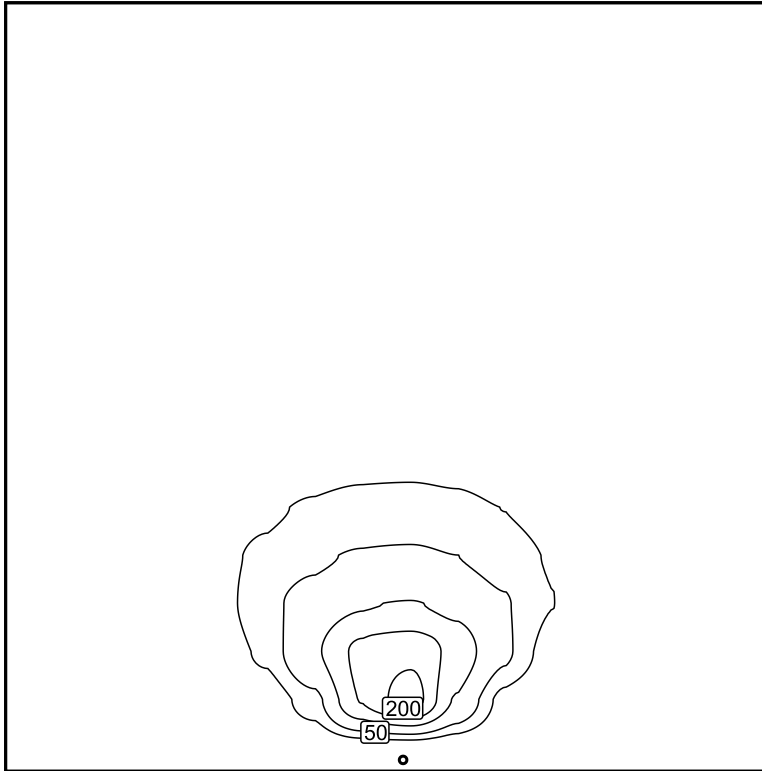
**Calculation surface 1: Perpendicular illuminance (Grid)**

**Light scene: Light scene 1**

Average: 12.1 lx, Min: 0.036 lx, Max: 223 lx, Min/average: 0.003, Min/max: 0.000

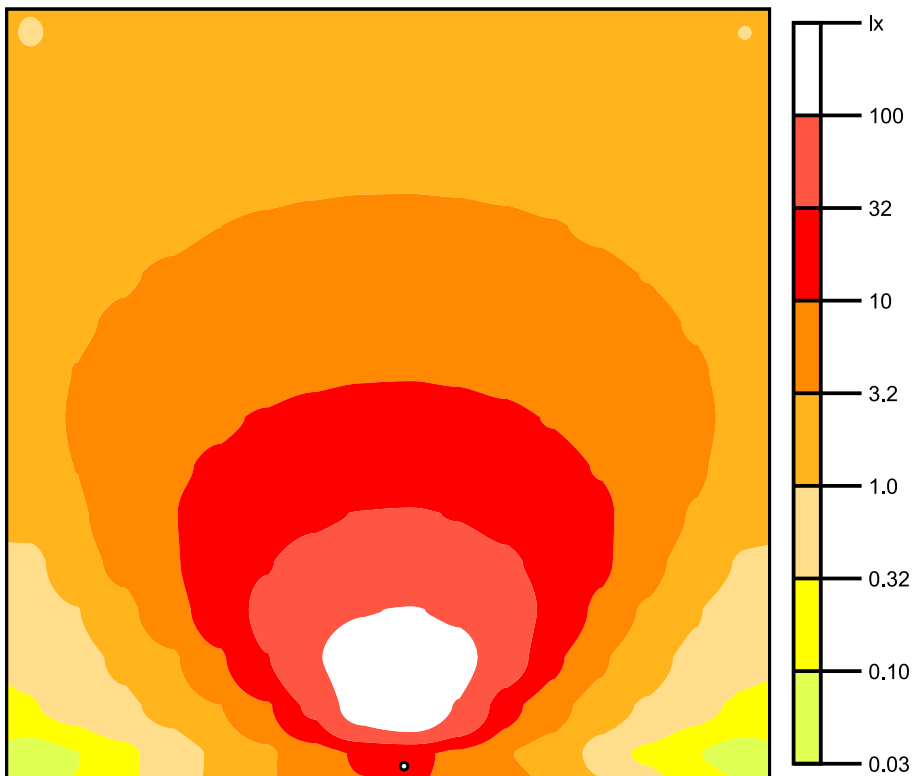
Height: 0.000 m

## Isolines [lx]



Scale: 1 : 500

## False colours [lx]



Scale: 1 : 500

### Value grid [lx]

+0.98	+1.2	+1.4	+1.5	+1.6	+1.5	+1.3	+1.1
+1.1	+1.4	+1.7	+1.9	+1.9	+1.8	+1.6	+1.3
+1.3	+1.7	+2.0	+2.3	+2.4	+2.2	+1.9	+1.5
+1.5	+2.0	+2.5	+2.9	+3.0	+2.8	+2.4	+1.8
+1.7	+2.4	+3.2	+3.7	+3.9	+3.6	+2.9	+2.2
+1.9	+2.9	+4.0	+4.8	+5.1	+4.6	+3.7	+2.5
+2.2	+3.5	+5.1	+6.4	+6.9	+6.1	+4.6	+3.0
+2.2	+4.2	+6.7	+8.8	+9.6	+8.3	+5.9	+3.4
+2.1	+5.0	+8.8	+12	+14	+12	+7.6	+3.9
+1.8	+5.5	+12	+18	+21	+17	+9.6	+3.7
+1.4	+5.1	+15	+28	+34	+25	+12	+2.8
+0.74	+4.0	+18	+43	+57	+37	+12	+1.9
+0.54	+2.2	+16	+68	+103	+53	+7.4	+1.1
+0.38	+1.2	+8.6	+91	+189	+58	+3.7	+0.74
+0.29	+0.77	+3.1	+38	<u>223</u>	+16	+1.9	+0.45
<u>0.04</u>	+0.23	+1.2	+6.2	+12	+3.5	+0.57	+0.11

Scale: 1 : 500

### Value chart [lx]

m	-23.675	-20.518	-17.362	-14.205	-11.048	-7.892	-4.735	-1.578	1.578	4.735	7.892	11.048	14.205	17.362	20.518	23.675
<b>23.846</b>	0.98	1.09	1.20	1.30	1.39	1.47	1.52	1.55	1.55	1.53	1.48	1.41	1.33	1.22	1.11	0.99
<b>20.667</b>	1.13	1.27	1.42	1.55	1.68	1.78	1.86	1.90	1.90	1.88	1.81	1.71	1.59	1.45	1.30	1.15
<b>17.487</b>	1.30	1.49	1.69	1.87	2.05	2.19	2.30	2.36	2.37	2.33	2.23	2.10	1.93	1.74	1.53	1.34
<b>14.308</b>	1.49	1.76	2.02	2.28	2.53	2.74	2.89	2.98	3.00	2.93	2.80	2.60	2.36	2.09	1.82	1.54
<b>11.128</b>	1.70	2.06	2.43	2.80	3.16	3.46	3.70	3.84	3.86	3.77	3.56	3.27	2.92	2.54	2.16	1.77
<b>7.949</b>	1.93	2.41	2.94	3.47	3.99	4.46	4.83	5.05	5.08	4.94	4.63	4.19	3.66	3.10	2.55	2.02
<b>4.769</b>	2.16	2.79	3.53	4.33	5.12	5.86	6.45	6.80	6.87	6.64	6.14	5.45	4.63	3.82	2.99	2.27
<b>1.590</b>	2.22	3.21	4.23	5.45	6.66	7.86	8.84	9.45	9.59	9.19	8.34	7.20	5.91	4.63	3.45	2.46
<b>-1.590</b>	2.11	3.38	4.99	6.75	8.76	10.8	12.5	13.6	13.9	13.2	11.6	9.66	7.61	5.54	3.90	2.33
<b>-4.769</b>	1.79	3.20	5.46	8.27	11.6	15.0	18.3	20.5	21.0	19.7	16.8	13.1	9.55	6.46	3.72	1.82
<b>-7.949</b>	1.41	2.64	5.13	9.54	14.9	21.4	27.8	32.4	33.5	30.6	24.8	18.0	11.6	6.42	2.80	1.29
<b>-11.128</b>	0.74	1.85	4.02	8.80	18.3	29.9	43.3	54.2	57.1	50.0	36.9	23.2	12.1	4.50	1.88	0.90
<b>-14.308</b>	0.54	0.97	2.24	6.16	16.2	38.7	67.6	95.0	103	84.4	53.2	25.3	7.39	2.68	1.08	0.59
<b>-17.487</b>	0.38	0.64	1.20	2.68	8.56	30.6	90.8	162	189	133	57.9	13.0	3.71	1.52	0.74	0.39
<b>-20.667</b>	0.29	0.45	0.77	1.43	3.12	9.00	38.5	154	<b>223</b>	92.1	15.6	4.80	1.85	0.85	0.45	0.26
<b>-23.846</b>	<b>0.036</b>	0.098	0.23	0.52	1.16	2.61	6.19	11.1	11.5	8.44	3.46	2.09	0.57	0.25	0.11	0.043